



HOT POT MENU







## CHOOSE SOUP BASE

### SPECIALTY SOUPS



★ **CAPTAIN'S KONGEE** \$16

*Japanese pearl rice congee in Captain K's special broth. Topped with eggs, spring onions and sesame oil. Simply wholesome for a steamboat feast.*



★ **WHITE CHICKEN** \$12

*Thick and savoury white chicken broth sweetened with red dates and wolf berries. Delectable and extremely pleasing to drink.*



★ **KOREAN TOMATO** \$12

*Rich and hearty tomato soup simmered with fresh tomatoes and ginger over low heat and long hours. Deliciously sweet, juicy and smooth.*



★ **GINSENG CHICKEN** \$18

*Densely flavoured chicken soup infused with aromatic ginseng. Boiled for over 8 hours and served with a whole chicken stuffed with glutinous rice.*

### REGULAR SOUPS



**KOMBU DASHI** \$12

*Clear and unassuming vegetable soup made with high-quality dried sea kelp and bonito flakes. Tastily sweet with a strong depth of umami flavour.*



**KOREAN KIMCHI** \$12

*Mildly spicy and tangy classic Korean kimchi soup made with fermented cabbages and silken tofu. Rich, healthy and irresistibly heartwarming.*



★ **TOM YUM MUSHROOM** \$12

*Sour and spicy tomyum mushroom soup with a powerful fragrance of Thai herbs and spices. Pleasantly appetising and highly addictive.*



**SZE CHUAN MALA** \$12

*Fiery hot Mala soup baring a spicy and numbing experience that is not overpowering. Most popular among spicy lovers.*

**TWIN SOUP BASE + \$8**

*(Not applicable for Seafood Tower)*





**COMPLETE YOUR CAPTAIN K EXPERIENCE  
WITH OUR FINEST HOT POT INGREDIENTS**



# MEATS



★ **US SLICED  
BEEF STRIPLOIN**

\$16.00 *half portion*

\$32.00 *full portion*

**US WAGYU  
BEEF CHUCK  
ROLL**

\$12.00 *half portion*

\$24.00 *full portion*



**US PRIME  
SHORT RIB**

\$16.00 *half portion*

\$32.00 *full portion*



★ **US KUROBUTA  
PORK BELLY**

\$7.00 *half portion*

\$14.00 *full portion*



★ **US SLICED  
PORK COLLAR**

\$6.00 *half portion*

\$12.00 *full portion*



**US SLICED  
PORK**

\$6.00 *half portion*

\$12.00 *full portion*



**SLICED LAMB**

\$8.00 *half portion*

\$16.00 *full portion*



**CHICKEN  
BREAST**

\$6.00 *half portion*

\$12.00 *full portion*



**CHICKEN  
THIGH**

\$6.00 *half portion*

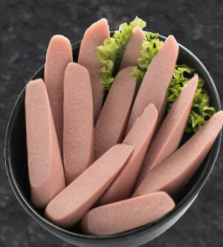
\$12.00 *full portion*



**LUNCHEON  
MEAT**

\$3.50 *half portion*

\$7.00 *full portion*



**CHICKEN  
SAUSAGE**

\$5.00 *half portion*

\$10.00 *full portion*



**CHEESY CHICKEN  
SAUSAGE**

\$6.00 *half portion*

\$12.00 *full portion*



# SEAFOOD



★ **SRI LANKA MUD CRAB (WHOLE)**

\$8.80 per 100 gms



★ **LOBSTER (WHOLE)**

\$8.80 per 100 gms



★ **HOKKAIDO SCALLOPS**

\$20.00 half portion (4 pcs)

\$40.00 full portion (8 pcs)



**SEA BASS (WHOLE)**

\$18.00 full portion



**GOLDEN POMFRET (WHOLE)**

\$22.00 full portion



**SQUID (WHOLE)**

\$12.00 full portion



**KING PRAWNS**

\$12.00 half portion (6 pcs)

\$24.00 full portion (12 pcs)



**VENUS CLAMS**

\$15.00 half portion (250 gms)

\$30.00 full portion (500 gms)



**BLUE MUSSELS**

\$9.00 half portion (150 gms)

\$18.00 full portion (300 gms)



# HOMEMADE BALLS & PASTES



★ **ASSORTED MEAT BALL COMBO**  
\$11.00 *full portion (8 pcs)*



★ **BEEF MEAT BALL**  
\$5.00 *half portion (4 pcs)*  
\$10.00 *full portion (8 pcs)*



★ **PORK MEAT BALL**  
\$4.00 *half portion (4 pcs)*  
\$8.00 *full portion (8 pcs)*



**BLACK PEPPER PORK MEAT BALL**  
\$5.00 *half portion (4 pcs)*  
\$10.00 *full portion (8 pcs)*



**MUSHROOM BALL**  
\$5.00 *half portion (4 pcs)*  
\$10.00 *full portion (8 pcs)*



**FISH MAW WITH PORK & FISH PASTE**  
\$12.00 *full portion*



★ **CENTURY EGG FISH PASTE**  
\$10.00 *full portion*



★ **EBIKO PRAWN PASTE**  
\$10.00 *full portion*



**HOMEMADE FISH PASTE**  
\$8.00 *full portion*



# DUMPLINGS



★ **PRAWN DUMPLING**  
\$4.00 *half portion*  
\$8.00 *full portion*



**SEAFOOD DUMPLING**  
\$4.00 *half portion*  
\$8.00 *full portion*



**CABBAGE PORK DUMPLING**  
\$4.00 *half portion*  
\$8.00 *full portion*



**CHIVE PORK DUMPLING**  
\$4.00 *half portion*  
\$8.00 *full portion*

# NOODLES



**FISH NOODLES**  
\$6.00 *full portion*



★ **KOREAN RAMEN**  
\$2.00 *full portion*



**UDON**  
\$3.00 *full portion*



**LA MIA★**  
\$3.00 *full portion*



**TANG HOON**  
\$3.00 *full portion*



**SWEET POTATO NOODLES**  
\$2.00 *full portion*



# VEGETABLES



**CHINESE  
CABBAGE**

\$3.00 *half portion*  
\$6.00 *full portion*



**BABY ROMAINE  
LETTUCE**

\$3.00 *half portion*  
\$6.00 *full portion*



**BABY CHINESE  
SPINACH**

\$3.00 *half portion*  
\$6.00 *full portion*



**SPINACH  
(PUAY LENG)**

\$3.00 *half portion*  
\$6.00 *full portion*



**BROCCOLI**

\$3.00 *half portion*  
\$6.00 *full portion*



★ **TANG O**

\$3.50 *half portion*  
\$7.00 *full portion*



★ **PAK CHOY**

\$3.00 *half portion*  
\$6.00 *full portion*



**SWEET CORN**

\$3.50 *half portion*  
\$7.00 *full portion*



**CHINESE  
LETTUCE**

\$3.00 *half portion*  
\$6.00 *full portion*



**SLICED WHITE  
RADISH**

\$2.00 *half portion*  
\$4.00 *full portion*



**SLICED  
POTATO**

\$2.00 *half portion*  
\$4.00 *full portion*



**SLICED  
BAMBOO SHOOT**

\$3.50 *half portion*  
\$7.00 *full portion*



# VEGETABLES CONT.



## SLICED LOTUS ROOT

\$3.00 *half portion*  
\$6.00 *full portion*



## SLICED YAM TARO

\$3.50 *half portion*  
\$7.00 *full portion*



## SLICED WINTER MELON

\$2.00 *half portion*  
\$4.00 *full portion*

# BEAN CURD



## FRIED TOFU

\$3.00 *half portion*  
\$6.00 *full portion*



## SILKEN TOFU

\$2.00 *half portion*  
\$4.00 *full portion*



## EGG TOFU

\$2.00 *half portion*  
\$4.00 *full portion*



## TOFU PUFF (TAU POK)

\$2.50 *half portion*  
\$5.00 *full portion*



## FIRM TOFU (TAU KWA)

\$2.00 *half portion*  
\$4.00 *full portion*



## ★ FRIED BEANCURD ROLL

\$4.00 *half portion*  
\$8.00 *full portion*



## BEANCURD SKIN WITH FISH

\$3.00 *half portion*  
\$6.00 *full portion*



## BEANCURD STICKS

\$2.00 *half portion*  
\$4.00 *full portion*



## BEANCURD SKIN STRIPS

\$3.00 *half portion*  
\$6.00 *full portion*



# MUSHROOMS



## ★ ASSORTED MUSHROOM COMBO

\$18.00 *full portion*



### SHIMEJI WHITE

\$4.00 *half portion*  
\$8.00 *full portion*



### SHIMEJI BROWN

\$4.00 *half portion*  
\$8.00 *full portion*



### OYSTER

\$3.00 *half portion*  
\$6.00 *full portion*



### KING OYSTER

\$3.50 *half portion*  
\$7.00 *full portion*



### SHIITAKE

\$3.50 *half portion*  
\$7.00 *full portion*



### ENOKI

\$3.50 *half portion*  
\$7.00 *full portion*



### BLACK FUNGUS

\$3.00 *half portion*  
\$6.00 *full portion*

# OTHERS



### QUAIL EGGS

\$4.00 *half portion*  
\$8.00 *full portion*



### EGGS

\$2.00 *full portion*



### CRAB STICK

\$4.00 *full portion*



### FISH BALL WITH ROE

\$4.00 *full portion*







# DRINKS

## SOLD



**PER BOTTLE** **\$18**

Original  
Lychee  
Green Grape  
Watermelon  
Peach

**PER BUCKET** **\$78**  
5 bottles

**PER BOTTLE** **\$9**  
Heineken / Cass



**PER BUCKET** **\$40**  
5 bottles



## BEER

## OTHERS



**ITALIAN SODA** **\$4.80**  
Apple / Mango / Watermelon / Lychee / Grapefruit

**HONEY YUZU TEA** **\$3.80**  
Served hot or cold

**CANNED DRINKS** **\$3.50**  
Coke / Sprite / Root Beer / Ayakata Green Tea

**GREEN / BARLEY TEA** **\$3.00**  
Served hot only





+

# DESSERTS

## TOFU CHEESECAKE

*Freshly made with seasonal infusion*

\$8.90

+

## HOKKAIDO CREPE CAKE

*Choice of fresh vanilla or green tea with red bean*

\$5.50

## TAIYAKI ICE CREAM

*Choice of red beans or matcha*

\$8.90

## TIRAMISU

*Coffee-flavoured Italian dessert cake*

\$9.50

## BELGIUM CHOCOLATE CAKE

*Luscious chocolate fudge cake coated with ganache*

\$9.50